

Step it Up

Interface®

### **经典造型,全新配色。**

Step it Up 源自 Look Both Ways 系列,堪称功能多样的空间基础,为地板提供多元搭配选择。

Step it Up 迎来更多色系,融汇多种精美都市灰色、街头风配色和秋季色调,凸显浑然一体的空间氛围。

Step it Up 提供丰富多样的设计及配色选择,确保每一寸空间都别具个性风范。

通过我们的 Carbon Neutral Floors™ (碳中和地材) 计划, Step it Up 产品可实现全生命周期碳中和。

### **Existing form. New colourways.**

Born out of the Look Both Ways collection, Step it Up is a versatile foundation, giving endless combinations to a floorplate.

The extended Step it Up colour range combines the best urban greys with streetwear-inspired colours and autumnal shades to unify and ground a space.

The breadth of design and colour options housed in Step it Up ensures every metre of space can have its own unique identity.

Step it Up is carbon neutral throughout its entire lifecycle through our Carbon Neutral Floors™ programme.







产品/PRODUCT STEP IT UP 颜色/COLOUR ALBA 安装/INSTALLED 上下错拼/ASHLAR



产品/PRODUCT STEP IT UP 颜色/COLOUR CONCRETE 安装/INSTALLED 左右错拼/BRICK



产品/PRODUCT STEP IT UP 颜色/COLOUR STEEL 安装/INSTALLED 左右错拼/BRICK







产品/PRODUCT STEP IT UP 颜色/COLOUR COAL 安装/INSTALLED 左右错拼



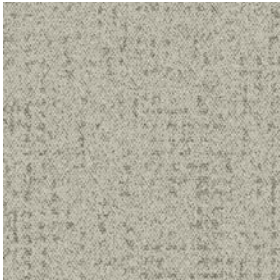
地毯产品/PRODUCT STEP IT UP 颜色/COLOUR SIENNA 安装/INSTALLED 左右错拼/BRICK  
地毯产品/PRODUCT STEP IN TIME 颜色/COLOUR EBONY 安装/INSTALLED 顺铺/MONOLITHIC



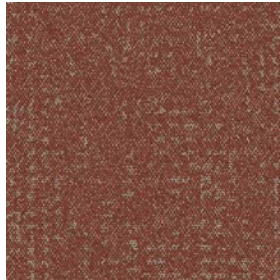
产品/CARPET PRODUCT STEP IT UP 颜色/COLOUR JADE 安装/INSTALLED 左右错拼/BRICK  
产品/LVT PRODUCT WALK-ON BY 颜色/COLOUR POLYCHROME 安装/INSTALLED 顺铺/MONOLITHIC

## Step it Up 色系/Colour Range

---



9406001 ALBA



9406006 SIENNA



9406009 INDIGO



9406012 JADE



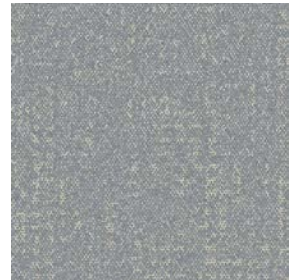
9406003 ASH



9406007 COAL



9406010 AZURE



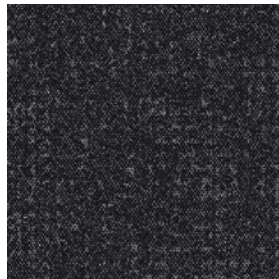
9406200 ARCTIC



9406005 EBONY



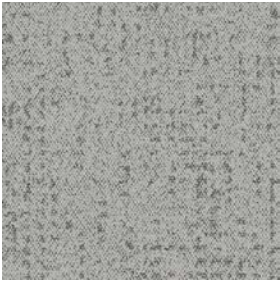
9406008 SLATE



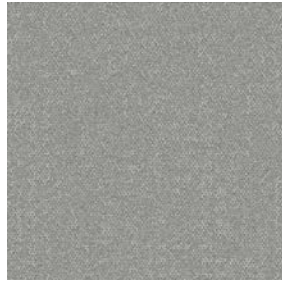
9406011 JET



9406201 SAGE



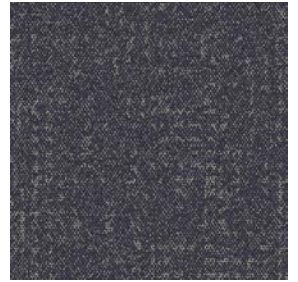
9406202 CONCRETE



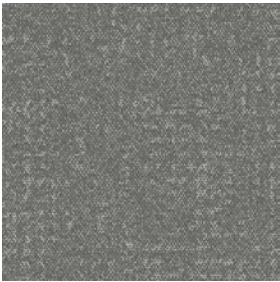
9406205 PEWTER



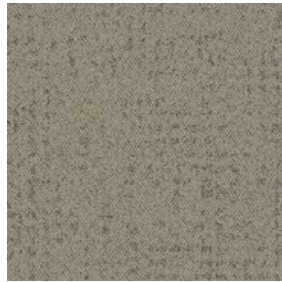
9406208 MUSTARD



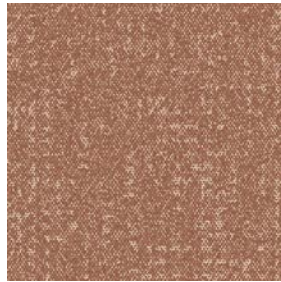
9406211 ROYAL



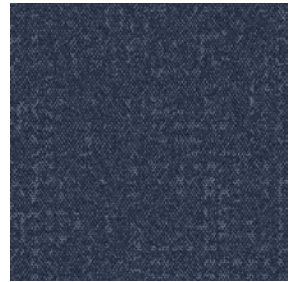
9406203 STEEL



9406206 MINK



9406209 TERRACOTTA



9406212 DENIM



9406204 COCOA



9406207 WHEAT



9406210 WINE



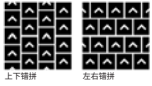
9406213 FERN



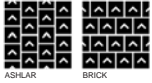
地毯产品/CARPET PRODUCT STEP IT UP 颜色/COLOUR SLATE 安装/INSTALLED 上下错拼/ASHLAR  
LVT 产品/LVT PRODUCT WALK-ON-BY 颜色/COLOUR POLYCHROME 安装/INSTALLED 顺铺/MONOLITHIC

## 规格/Specifications

产品型号	9406
产品结构	簇绒高低圈绒
纱线系统	100% 原液染色纱线
簇绒机器规格	1/12
毯毛厚度	2.1mm +/- 0.5mm
总厚度	6.0mm +/- 0.5mm
地毯尺寸	50x50cm
建议使用区域	商用 – 人流密集区域
ACCS (仅限澳大利亚)	商业重污区与楼梯
抗菌类型	Intersept®
抗污类型	Protekt <sup>2</sup> ®
安装方式	上下错拼, 左右错拼



Style Code	9406
Product Construction	Tufted Textured Loop
Yarn System	100% Solution Dyed Nylon
Machine Gauge	1/12
Pile Thickness	2.1 mm +/- 0.5mm
Total Thickness	6.0mm +/- 0.5mm
Tile Size	50x50cm
Area of Use	Commercial – Heavy Use
ACCS (Australia Only)	Commercial Heavy Duty & Stairs
Lifetime Antimicrobial	Intersept®
Soil/Stain Protection	Protekt <sup>2</sup> ®
Installation Methods	Ashlar, Brick



Carbon Neutral Floors™



英特飞在亚太地区的所有生产设施都经过 ISO 9001 质量管理体系和 ISO 14001 环境管理体系的认证。  
All Interface manufacturing facilities in the Asia Pacific region maintain registration to ISO 9001 Quality Management Systems and ISO 14001 Environmental Management Systems.

产品规格会受到实际生产公差的影响, 且可能会随时更新, 恕不另行通知。不同生产批次间的少许色差实属正常, 整体安装规划应将其考虑在内。产品质保以生产商提供的书面质保文件为准。对于所有其他保证, 包括但不限于对特定用途的适用性或适用性的任何暗示性担保, 本公司概不负责。敬请联系您的销售代表, 获得书面质保文件。

Production specifications are subject to normal manufacturing tolerances and may be changed without notice. Slight variation in colour among different production lots are normal and should be considered in the overall installation plan. Products covered by manufacturer's written warranty only. All other warranties, including without limitation any implied warranties of merchantability or fitness for particular purpose, are hereby disclaimed. Contact your representative for written warranty information.



**Carbon Neutral Floors™**

**www.interface.com**

**太仓生产基地/Manufacturing Facilities**

英特飞中国/Interface China  
tel: +86 512 5373 9888

**上海/Shanghai**

英特飞中国/Interface China  
tel: +86 21 6340 3868

**北京/Beijing**

英特飞中国/Interface China  
tel: +86 10 6590 7810

**香港/Hong Kong**

英特飞中国/Interface China  
tel: +852 2802 0838

**日本/Japan**

英特飞日本/Interface Japan  
tel: +81 3 5733 5211

**韩国/South Korea**

英特飞韩国/Interface South Korea  
tel: +82 2 555 1734

**东南亚/South East Asia**

英特飞亚洲/Interface Asia  
tel: +65 6478 1510

**澳大利亚/Australia**

英特飞澳大利亚/Interface Australia  
local toll free: 1800 804 361

**印度/India**

英特飞印度/Interface India  
tel: +91 80 4613 1313

03/2023  
SF9406C0



气候变化不可否认，但可以逆转。  
我们的任务就是要证明这一点。  
加入 #ClimateTakeBack (气候回归计划)，助力营造万物共荣的气候环境。

Climate change is undeniable. And reversible. Our mission is to prove it.  
**Join the #ClimateTakeBack and help create a climate fit for life.**